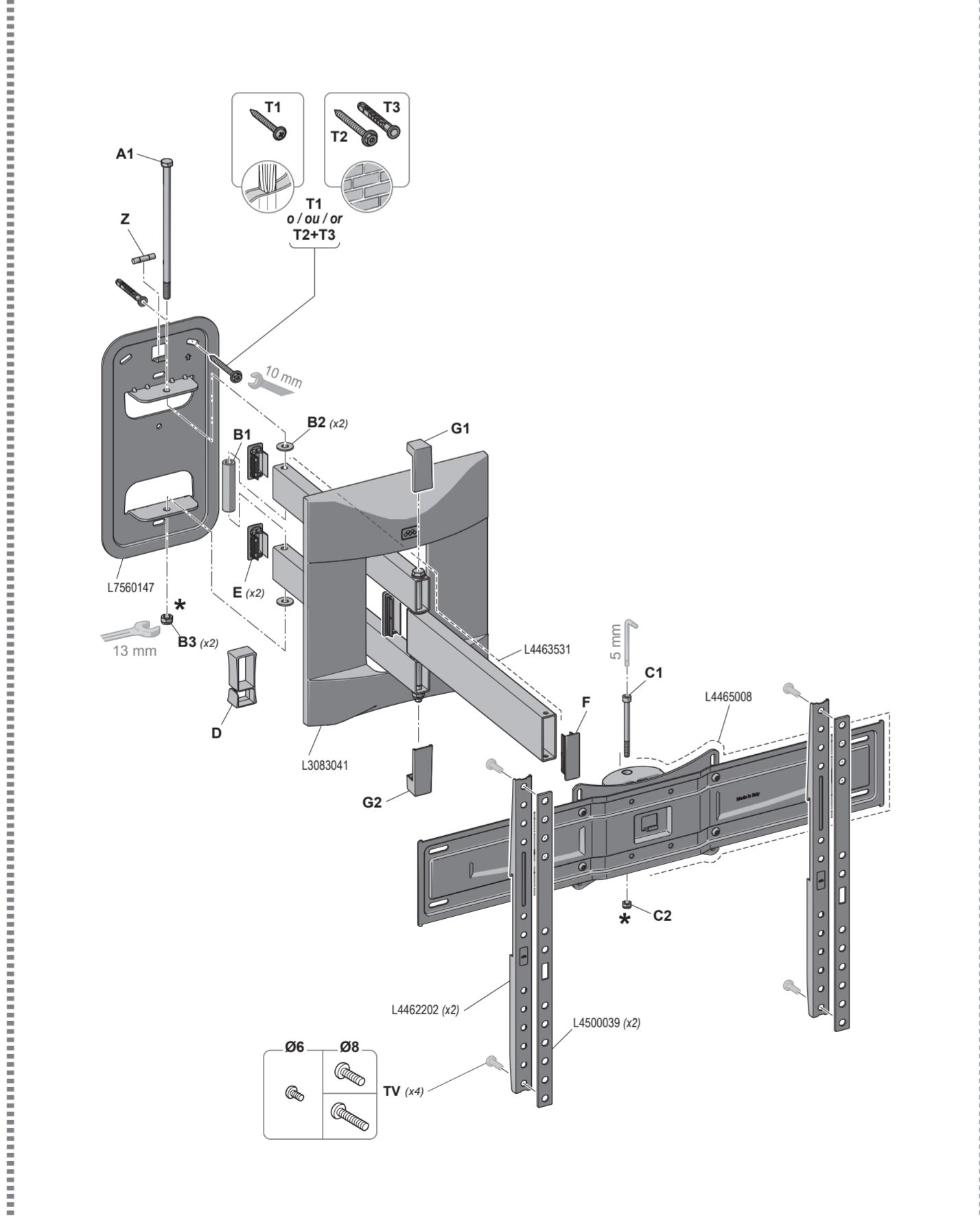
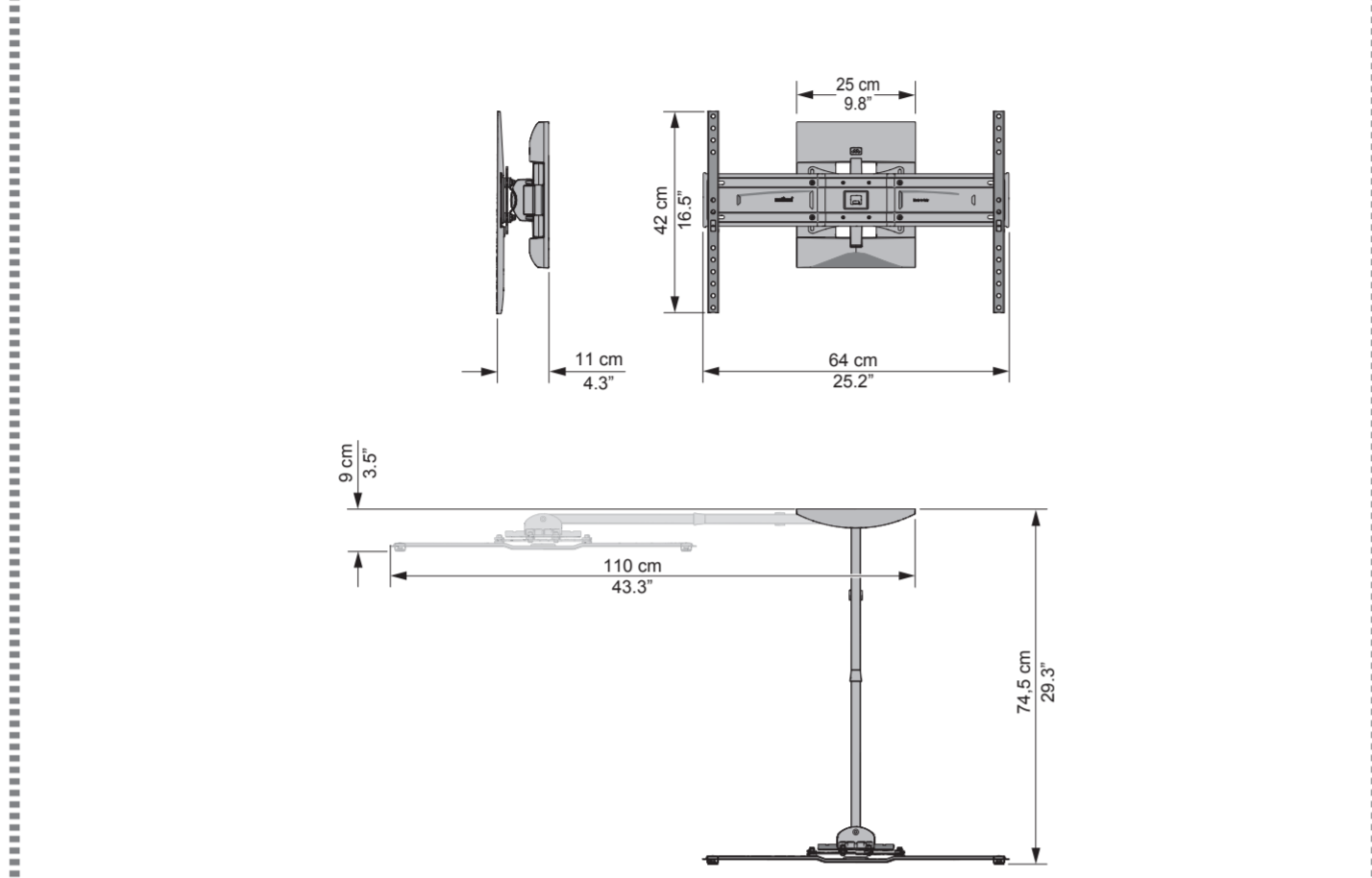
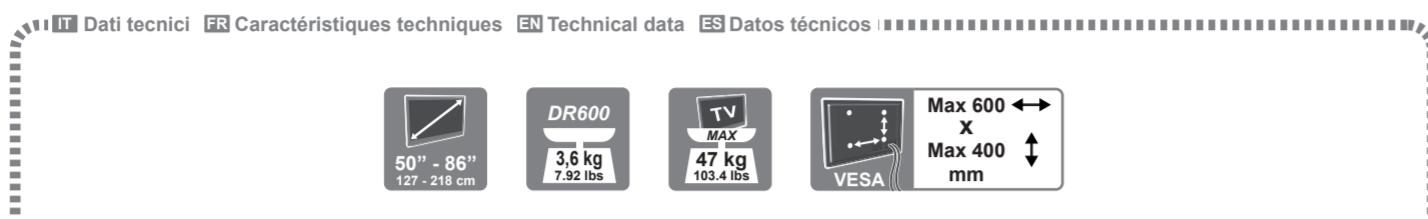
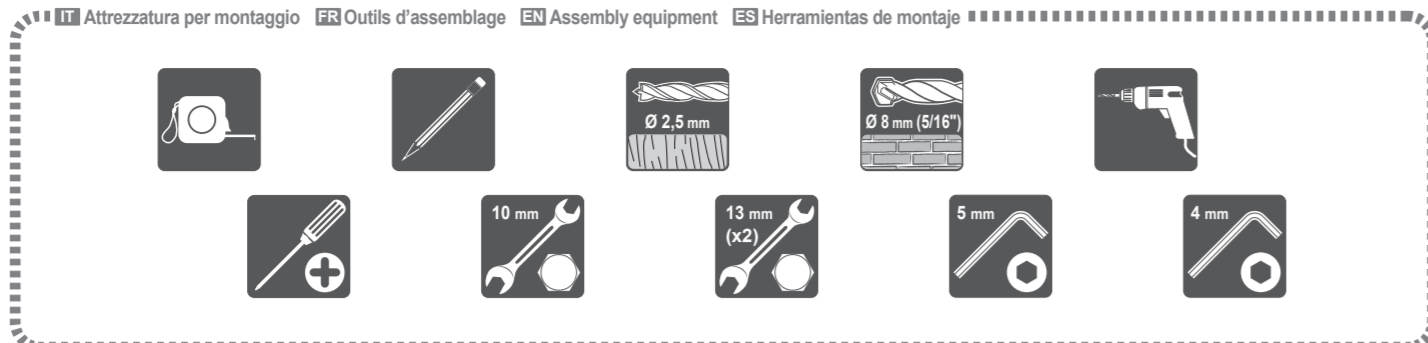
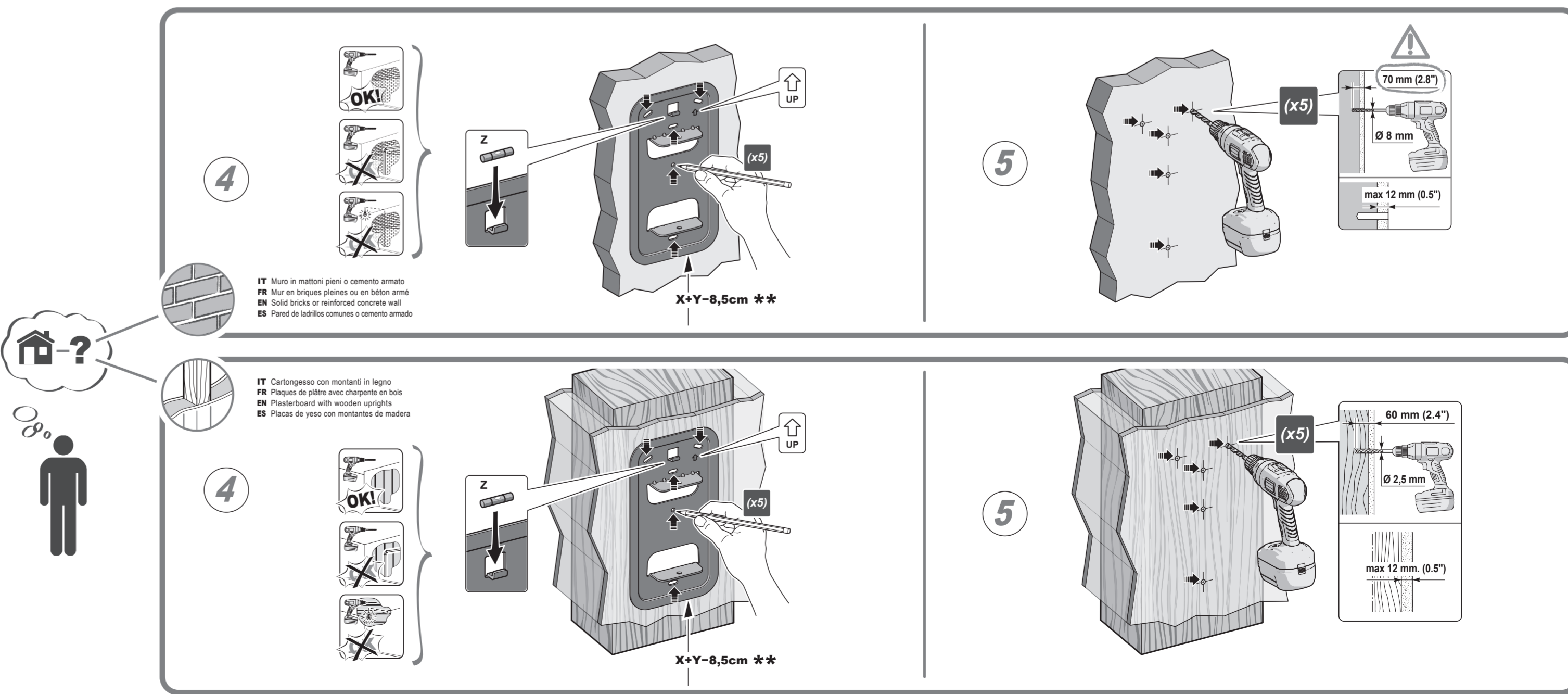
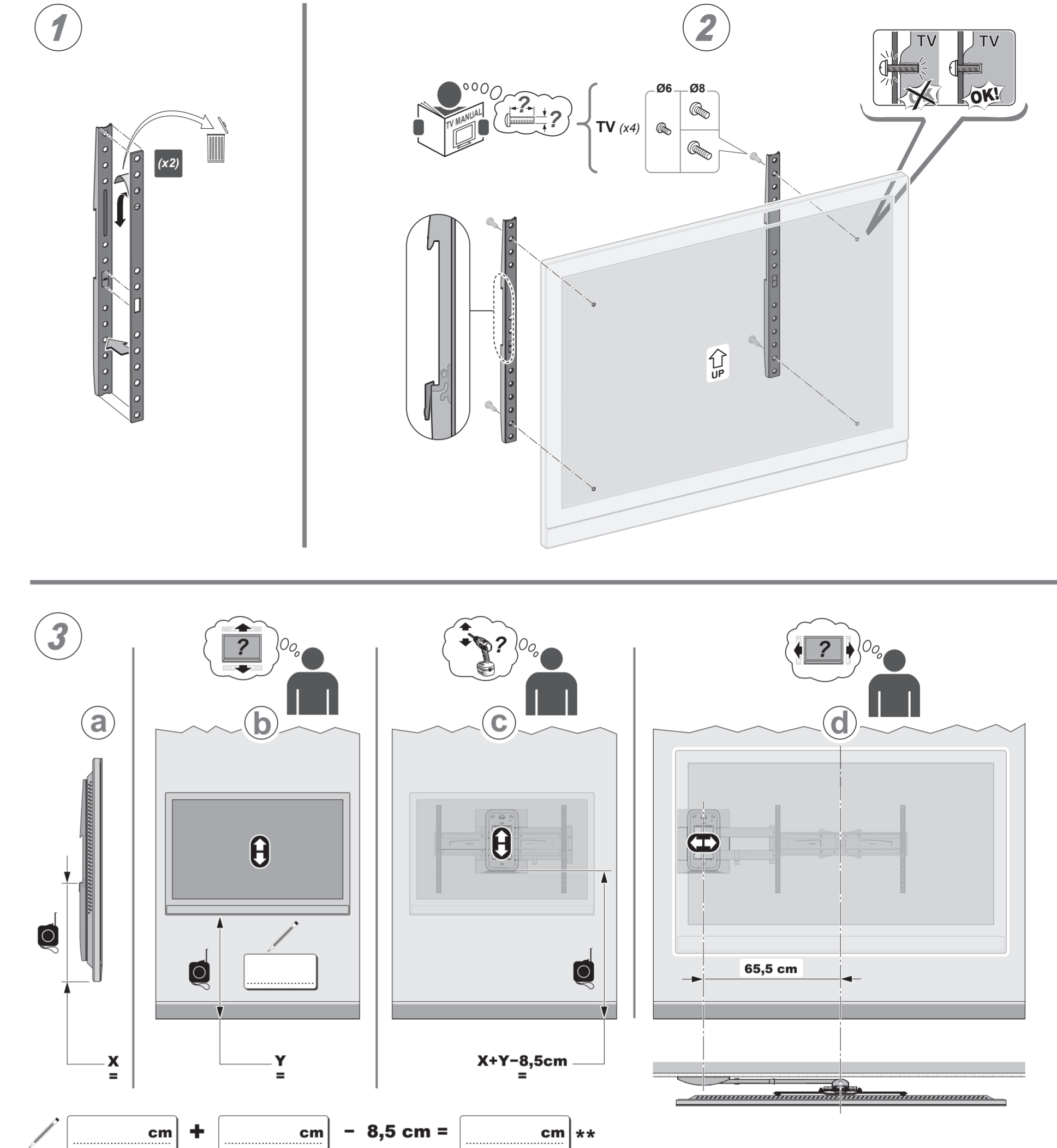
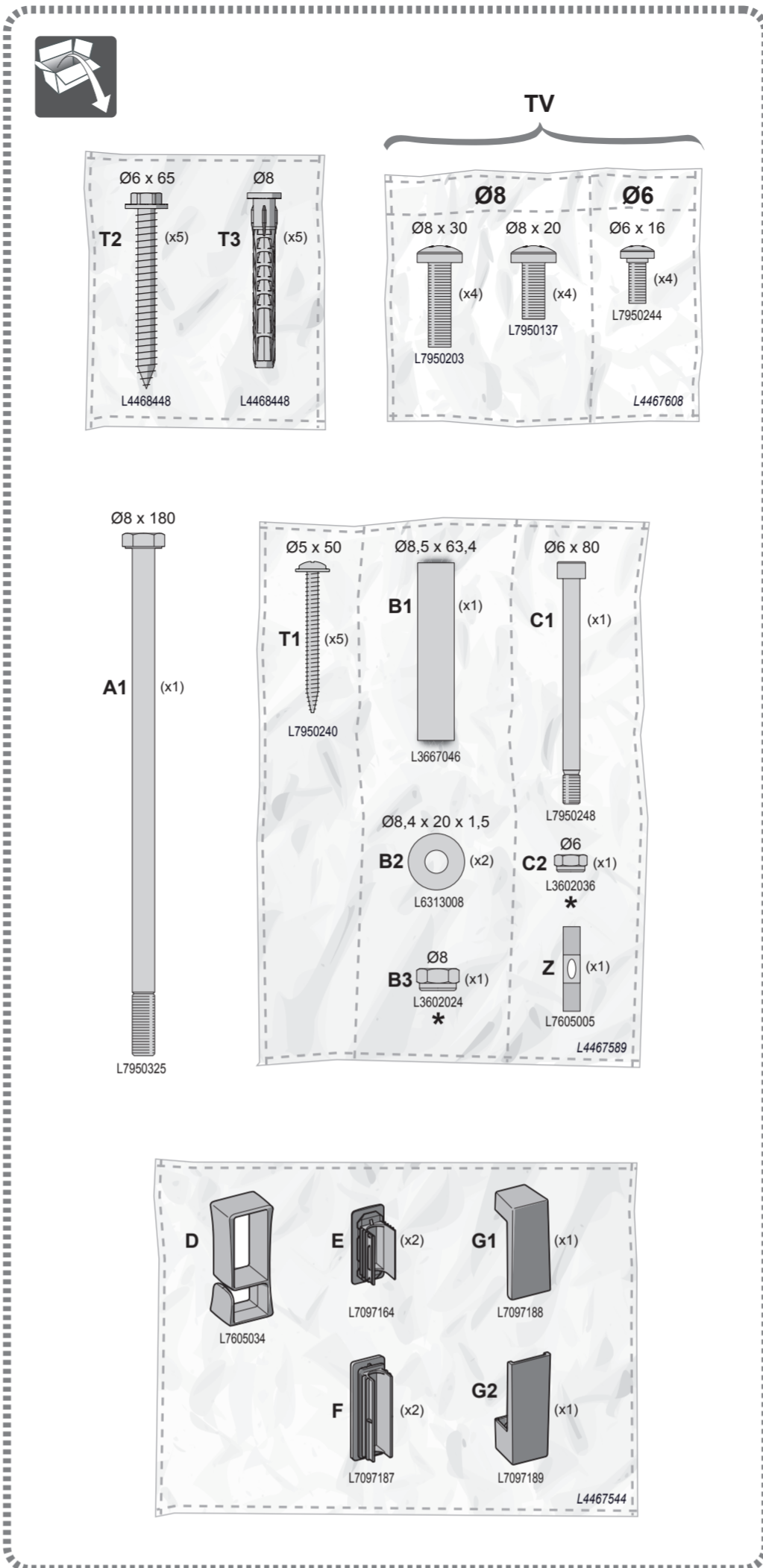
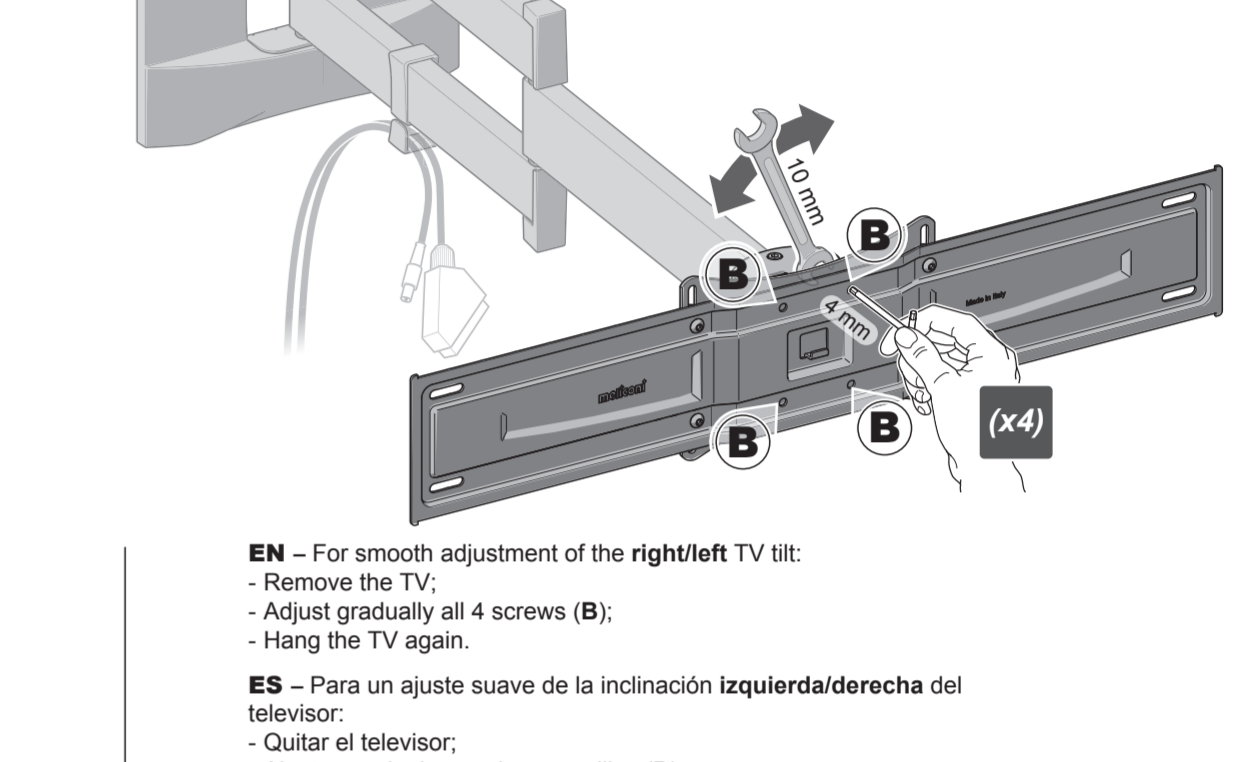
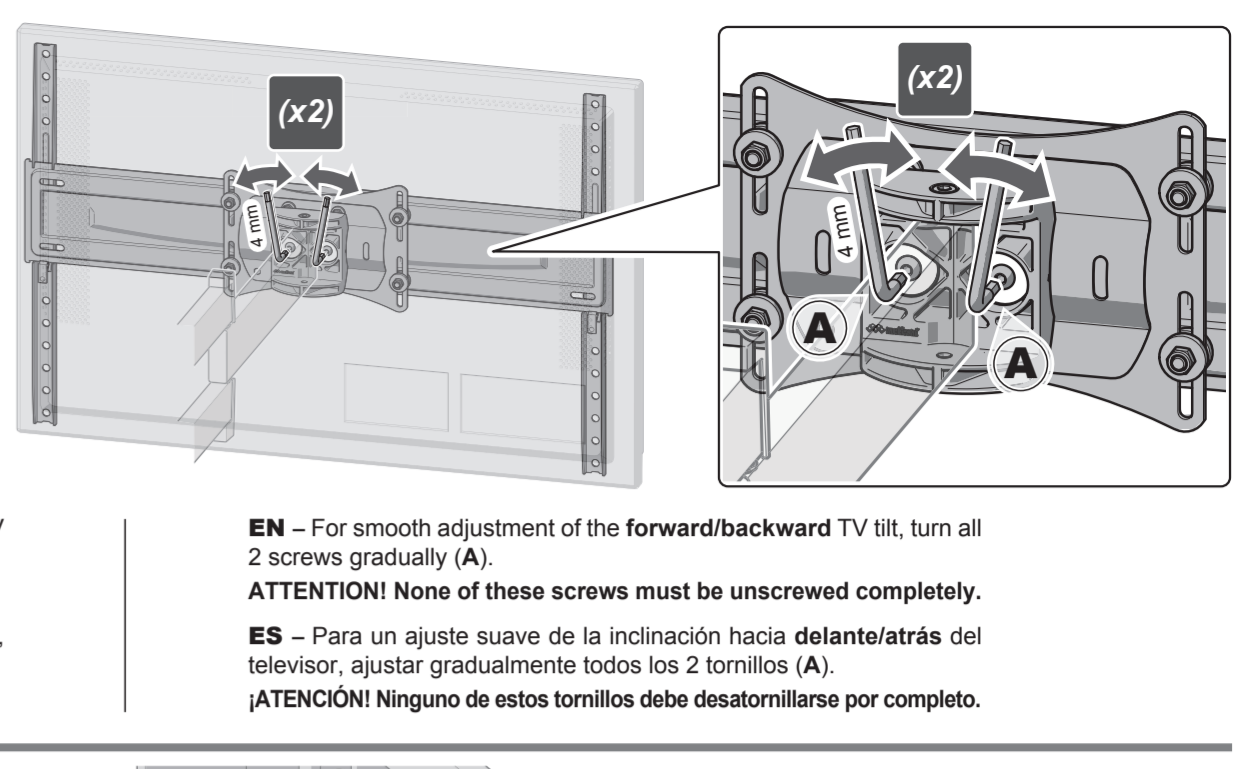
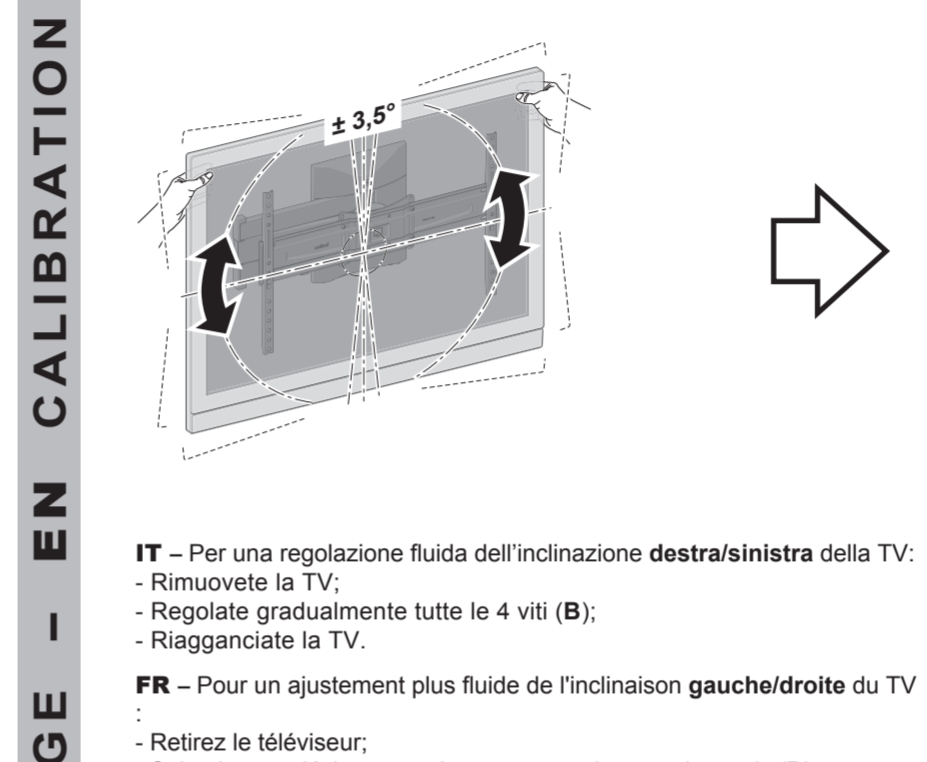
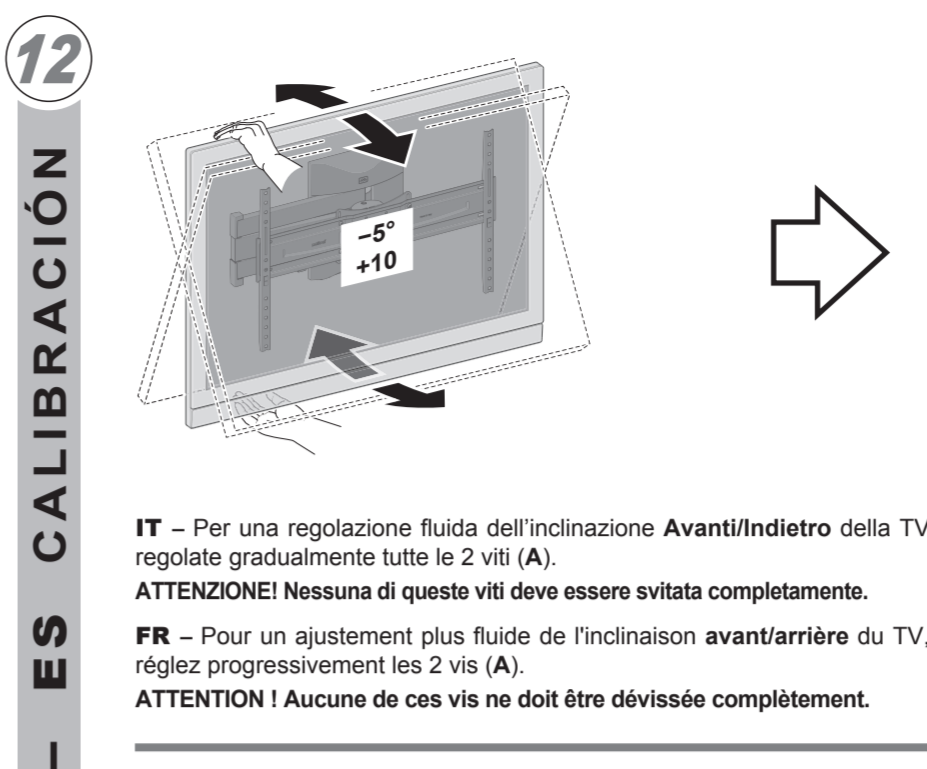
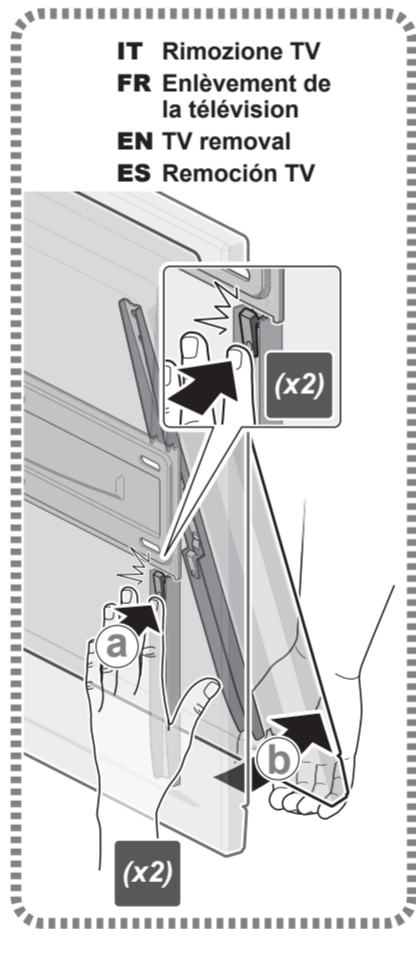
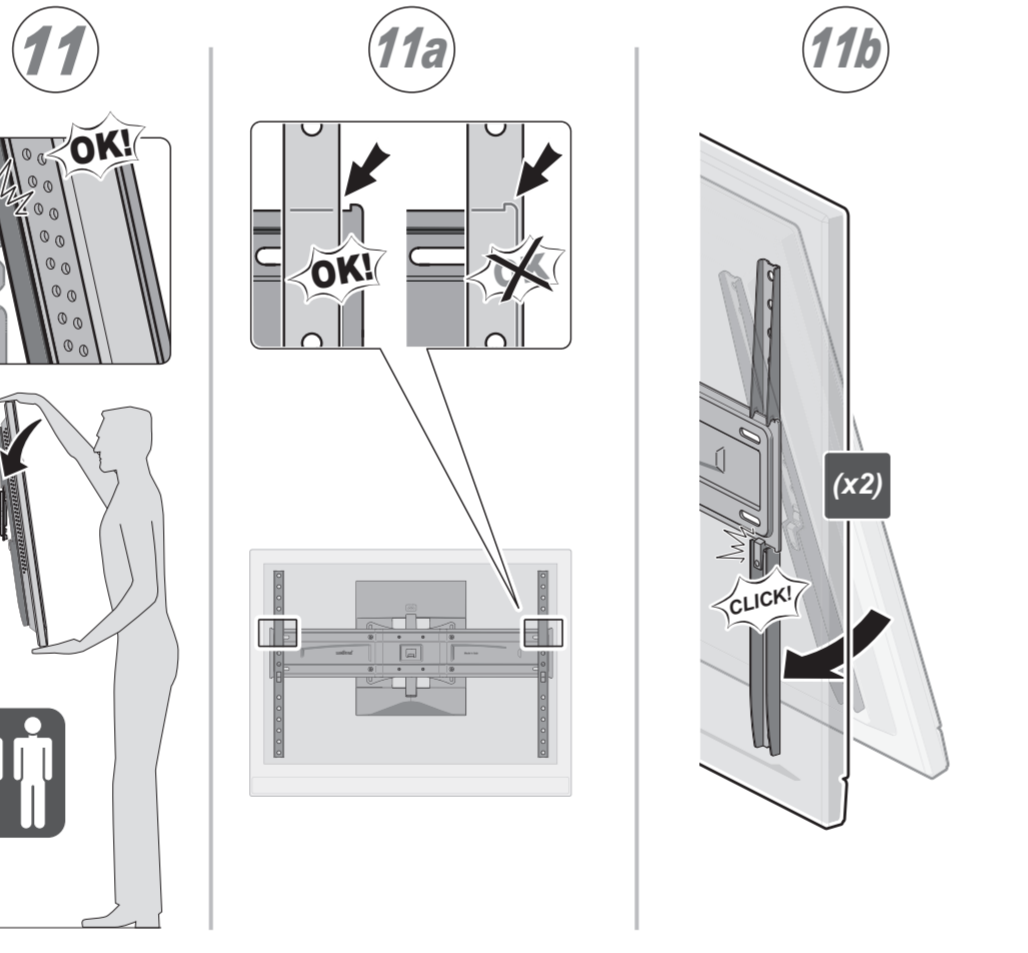
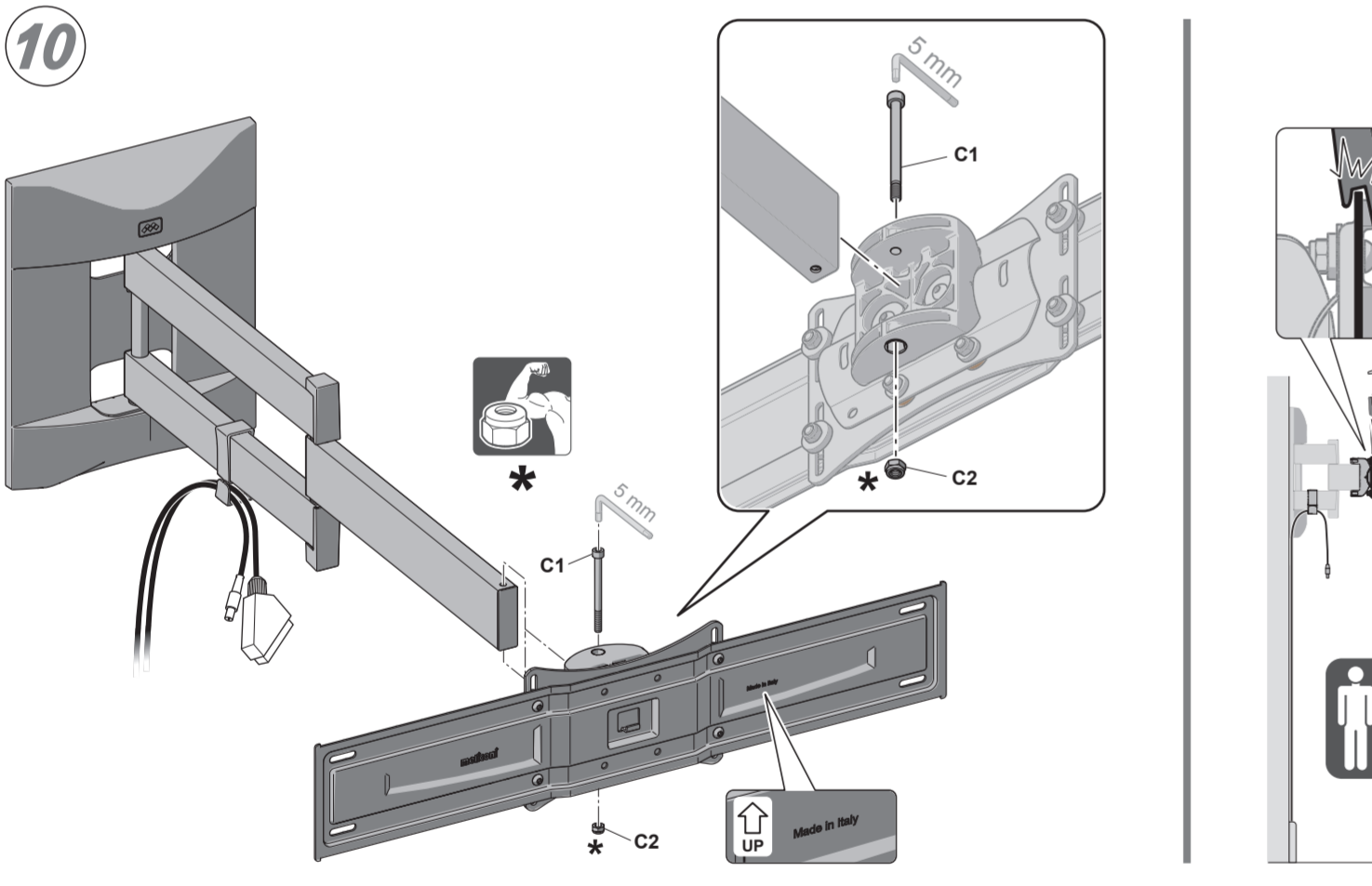
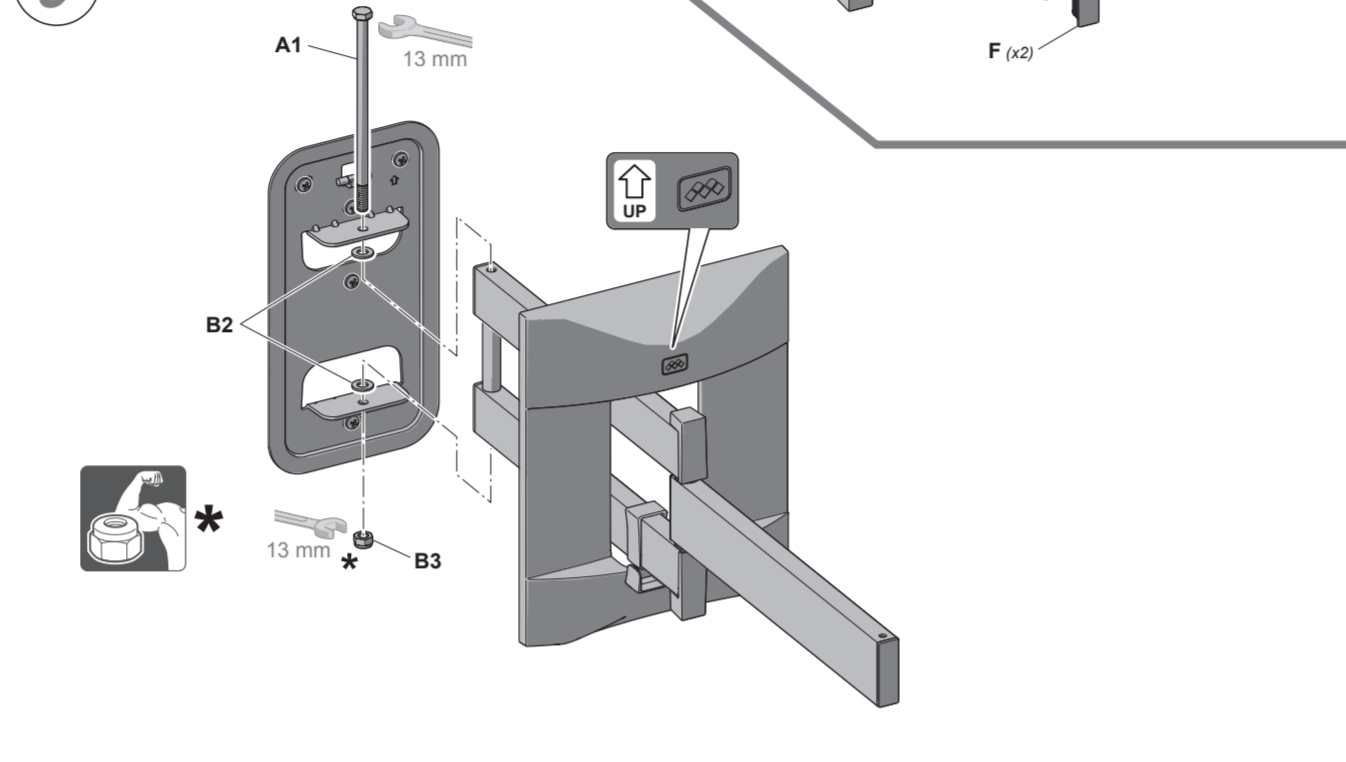
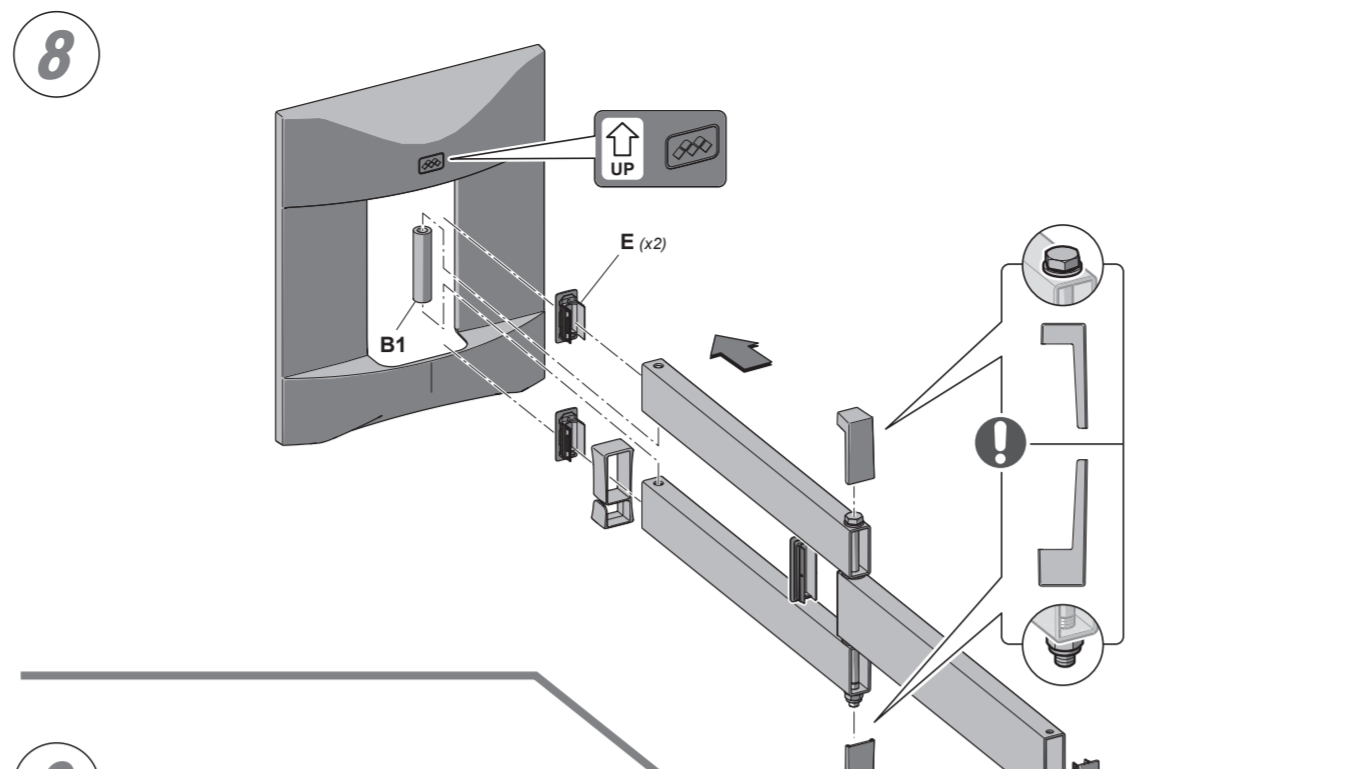
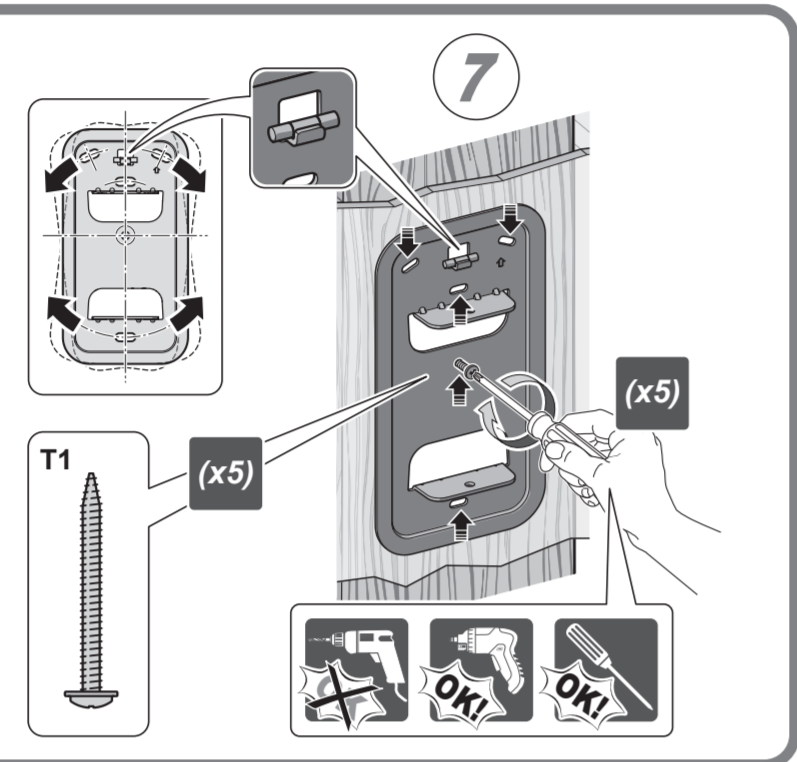
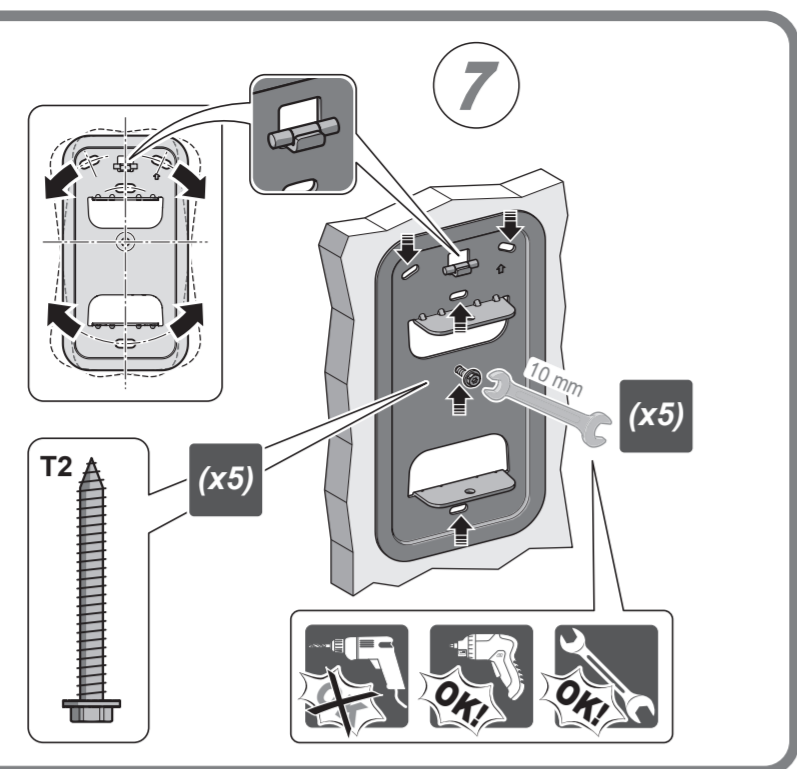
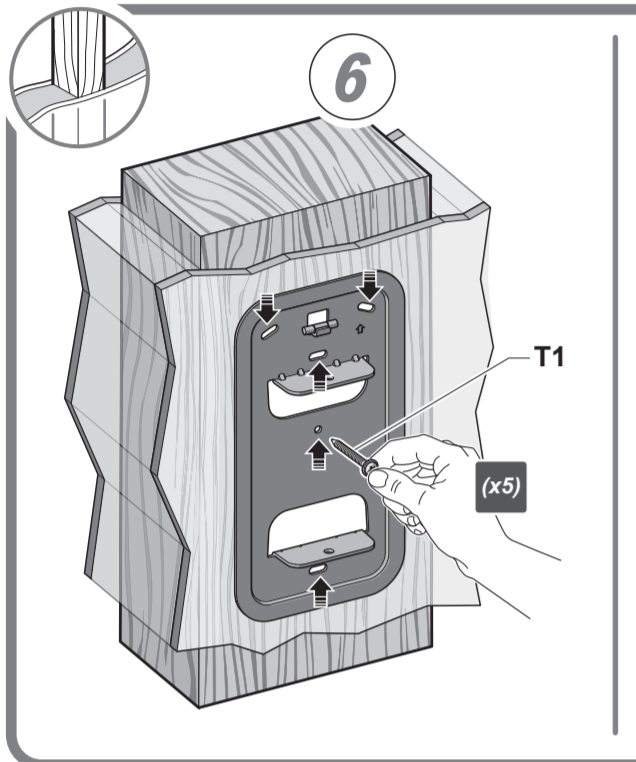
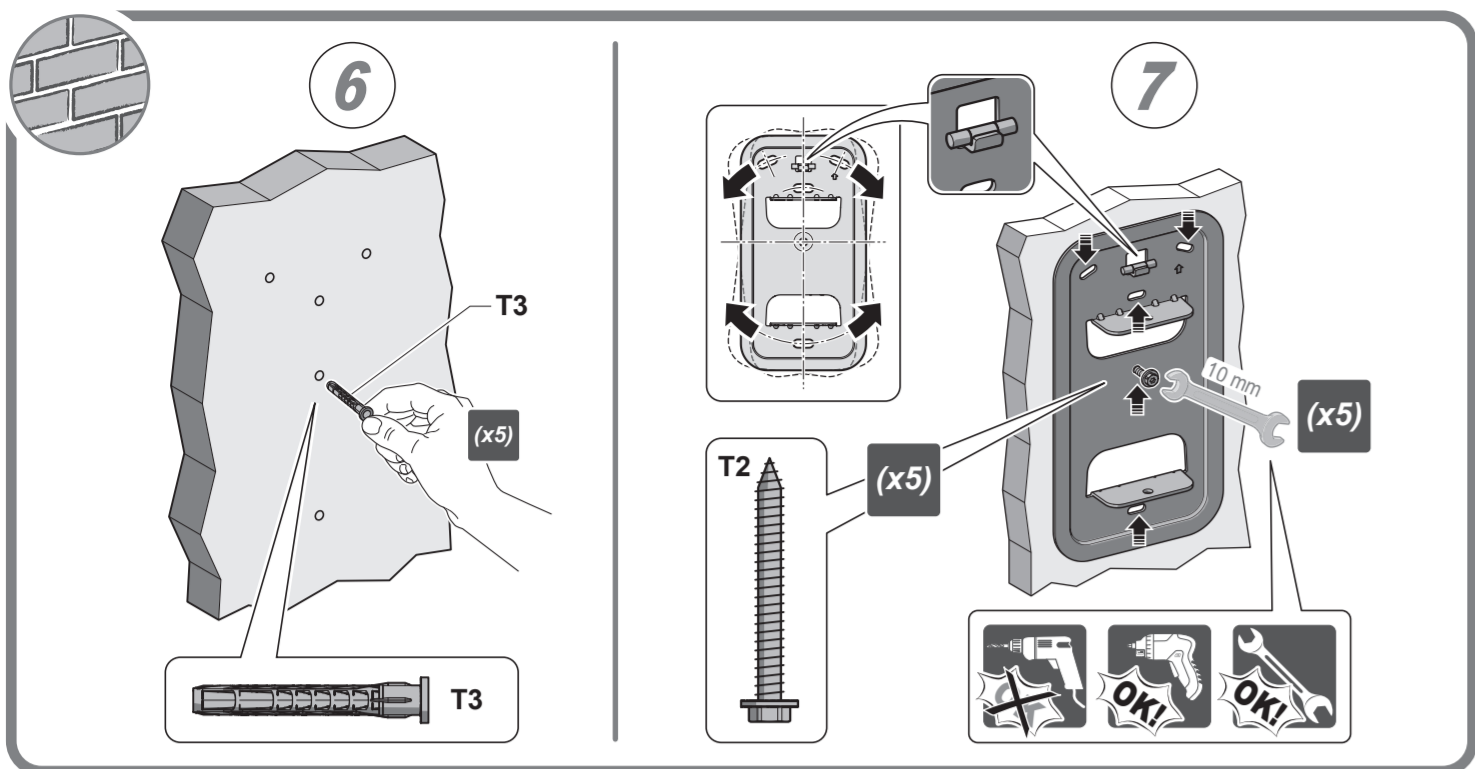


IT ISTRUZIONI DI MONTAGGIO
FR INSTRUCTIONS DE MONTAGE
EN MOUNTING INSTRUCTIONS
DE MONTAGEANLEITUNG
NL MONTAGEVOORSCHRIFT
ES GUÍA DE MONTAJE
PT INSTRUÇÕES DE MONTAGEM
PL INSTRUKCJA MONTAŻU
CZ NÁVOD K MONTÁŽI
RO INSTRUCȚIUNI DE MONTARE
HU SZERELÉSI ÚTMUTATÓ
FI ASENNUSOHJEET
SK NÁVOD NA MONTÁŽ
SL NAVODILA ZA MONTAŽO
MK INSTRUKCIJA ZA MONTAŽA
SQ UDHËZIME PËR MONTIMIN



***** IT Dado autobloccante, specifico per evitare svitamenti accidentali. Avvitare in maniera decisa, con gli appositi attrezzi, anche dopo aver avvertito la prima resistenza.
FR Ecrou autobloquant, conçu pour éviter tout desserrage accidentel. Serrez fermement, avec les outils appropriés, même après avoir perçu la première résistance.
EN Self-locking nut, designed to prevent accidental loosening. Tighten firmly, with the correct tools, even after feeling the first resistance.
ES Tuerca autobloqueante para evitar que se afloje. Enroscar a fondo con las herramientas específicas, incluso después de haber notado la resistencia inicial.





IT - Vi consigliamo di leggere attentamente le istruzioni prima di utilizzare il prodotto e di conservarle per future necessità... FR - Lire attentivement les recommandations et les instructions de montage avant d'utiliser le produit... ES - Lea atentamente las advertencias y las instrucciones de montaje antes de usar este producto...

IT - Rimozione TV FR Enlèvement de la télévision ES Remoción TV

IT - Per una regolazione fluida dell'inclinazione Avanti/Indietro della TV regolate gradualmente tutte le 2 viti (A). ATTENZIONE! Nessuna di queste viti deve essere svitata completamente.

IT - Per una regolazione fluida dell'inclinazione destra/sinistra della TV: - Rimuovete la TV; - Regolate gradualmente tutte le 4 viti (B); - Riagganciate la TV.

IT - Per una regolazione fluida dell'inclinazione destra/sinistra della TV: - Ritirez le téléviseur; - Selon le cas, dévissez ou vissez progressivement les 4 vis (B); - Remplacez le TV sur le support.

IT - Per una regolazione fluida dell'inclinazione Avanti/Indietro della TV regolate gradualmente tutte le 2 viti (A). ATTENZIONE! Nessuna di queste viti deve essere svitata completamente.